



Fact Sheet Villages of Tuscany

General information

Name of the village	MAGLIANO IN TOSCANA
Province	Grosseto
Tourist information	<ul style="list-style-type: none"> • Tourist Information Office Via Garibaldi 12 - Magliano in Toscana (GR) Phone +39 0564 592102 - +39 0564 59341 Email info@vivimaglianointoscana.it • PRO LOCO "MAGLIANO IN TOSCANA" Tourism Promotion Association Corso Garibaldi,10 - Magliano in Toscana (GR) Email pro.locomagliano@libero.it 
Notes	For people with reduced mobility, it is recommended to visit the village with an electric drive or with the help of a companion. The roads can in fact be bumpy and not always easily accessible, as it is a medieval village.



Project promoted by



Regione Toscana

TESTED BY: [Handy Superabile Social Promotion Association](#) in 2025

Please note: The following information refers to the date of verification shown at the bottom of each sheet. The Association is not responsible for any significant changes made by the property after the visit.

Table of Contents

General information	1
Description.....	3
How to reach Magliano in Toscana.....	6
Parking	10
Pathway from the car park to the entrance	14
Description of the itinerary	15
Events.....	17
Accessible public places	32
Communal toilets	35
Medical practices/healthcare facilities.....	37

Project carried out with the contribution of the



Presidenza del
Consiglio dei Ministri
Ministro per la disabilità



Description



Territory rich in evidence of Etruscan and medieval times. The castle is still surrounded by a compact circle of walls, restored by the Republic of Siena in the fifteenth century. The village lies on a very gentle hill where to the west there is the sea, while around, a truly evocative landscape characterized by a countryside full of olive groves. According to some historians, the coat of arms of the town, a "mallet", derives from the "*Maielns*" tool used in the past by travertine diggers of which the geology of the territory seems to be rich, while for other historians, from the settlement of the "*Gens Manlia*" in the first century BC

The identification of Magliano with the Roman colony of Heba is now certain even if some testimonies demonstrate the existence of settlements of social life already in





earlier times. With the descent of the Lombards into Italy, the territory experienced a phase of decadence which was followed by a flowering around the year 1000.

In fact, it is from this period that numerous abbey buildings were built by monastic institutions, today mostly disappeared or reduced to ruins, such as the Monastery of San Bruzio, in bold Romanesque style. The Monastery was an important rectory dedicated to San Tiburzio and dating back to the end of the twelfth century.

The castle belonged to the Aldobrandeschi, but in 1326 it was occupied by the King of Naples and granted by Charles, Duke of Calabria and head of the imperial forces, to the Counts Pannocchieschi, but the following year, with the intervention of Ludovico il Bavaro, it was returned to the Counts of Santa Fiora; the Pannocchieschi abandoned the castle after setting it on fire. In 1358 the Counts granted the castle to the Republic of Siena, which in turn granted it in lordship to Spinello di Spinello Tolomei.

The Sienese as usual took care of rebuilding the castle and twenty years later they sent their qualified teachers, for the readaptation of the walls and to give the town a regular urban layout.

The Sienese dominion ended in the mid-sixteenth century when the center became part of the Grand Duchy of Tuscany, at the time controlled by the Medici, and since then it has followed its fate.

The Walls of Magliano

The Walls of Magliano constitute the defensive circle of the village of the same name. A first wall was built in the late Middle Ages around the fortress. The circuit was built around the year 1000 by the noble family of the Aldobrandeschi. Unfortunately, all trace





of this first wall has been lost today, but we know that the family built it by finishing it in 1323, as evidenced by the plaque placed at the back of the square tower of Porta San Giovanni.

Partially destroyed around the middle of the Quattrocento by the Sienese, who at that time controlled the entire territory, it was rebuilt to strengthen the defensive devices. The Republic of Siena commissioned

important architects to redevelop the old city walls, strengthening it and making it more efficient, so much so that even today it appears almost intact.

A careful restoration work that took place in the years between the end of the last century and the beginning of the new millennium has made it possible to bring the monument back to its former glory in its complexity, after a period of degradation that had been observed previously. Due to the disastrous effects of the flood of the Maremma Grossetana on November 12, 2012, the collapse of a Renaissance bastion and a stretch of curtain wall occurred.

The walls of Magliano in Toscana are formed by stone curtain walls, sometimes decorated with blind arches and battlements, interspersed with 9 towers and equipped with 3 access doors. As a whole, the walls are intact, with the characteristic Renaissance stylistic elements clearly evident.

In the south-eastern section, the medieval remains of the primitive defensive structure have been well preserved, well integrated into the remaining circle of a later period. In particular, the Porta di San Giovanni, which has a round arch in travertine blocks, and the adjacent Torre di San Giovanni, with a square base, located just to the right of the door, date back to the fourteenth century. Of the other 8 towers along the walls, there are two others with a square base, of clear medieval origins, and six with a semicircular base that overlook the western stretch: the latter were built in the Renaissance era.





The other two access gates are the Porta di San Martino, of medieval origins, which opens on the northern side near the parish church of the same name with battlements and stylistic elements of the Aldobrandesca period, and the Porta Nuova, of the fifteenth century, built by the Sienese along the south-western stretch of the walls with machicolations and top battlements. Along the stretch of the Porta Nuova there is a patrol walkway, an elevated path, which in the past allowed the guards to patrol and defend the structure from above, with an advantageous position.

The elevated patrol walkway, which today represents an important panoramic tourist route, historically served to control the surroundings and defend the fortress or city from enemy attacks, protecting the soldiers thanks to parapets and battlements and allowing a rapid movement of troops along the fortified perimeter.

How to reach Magliano in Toscana

<p>By car</p>	<p>From the North</p> <p>from Florence, reach the motorway junction continuing towards Siena, and then take the SS223 until you reach Grosseto. The correct signs are those that show the road to Grosseto Sud. At the end of the route, take the Aurelia until you reach the exit whose signs will refer to Montiano/Magliano</p>
----------------------	---

Project carried out with the contribution of the





	<p>From the South</p> <p>From Rome, follow the signs starting from the A12 and reach the exit for Manciano. From there on, continue on the Provincial Road (called Perrina), and finally take the SS323 that will lead to your destination.</p>
By plane	<p>The preferred airports to reach Magliano in Toscana are:</p> <ul style="list-style-type: none"> • Florence "Amerigo Vespucci" Airport, located about 135 km from Magliano in Toscana; • Rome Fiumicino Airport, located 150 km from Magliano in Toscana • Pisa "Galileo Galilei" Airport, located about 170 km from Magliano in Toscana.
Assistance service for people with disabilities	Yes
Embarkation/disembarkation of passengers with reduced mobility	With courtesy chair and ambulift/finger
Tactile paths for the blind and visually impaired	Yes



Project promoted by



Regione Toscana

There is a toilet room accessible with grab handles	Yes
By train	
Nearest station	The local railway stations for Magliano in Toscana are Grosseto and Talamone.

Project carried out with the contribution of the



**Presidenza del
Consiglio dei Ministri**
Ministro per la disabilità



<p>Assistance service for people with disabilities</p>	<p>The Grosseto station is enabled for the assistance service for people with disabilities and reduced mobility (PRM), while the Talamone station is not enabled. To use the service, it is necessary to contact the Italian Railway Network through the relevant Blue Room, at the following addresses:</p> <ul style="list-style-type: none"> • toll-free number: 800 90 60 60 (from a landline) • National number: 02 32 32 32 (from a landline or mobile) <p>The service provides information on the nearest enabled station and allows assistance to be booked.</p>
<p>Blue Hall Reference</p>	<p>Florence</p>
<p>There is a toilet room in the station accessible with grab handles</p>	<p>Yes</p>
<p>By public and private transport</p>	
<p>Nearest bus stop</p>	<p>The public transport service is operated by Autolinee Toscane, which offers connections from Grosseto to Magliano in Toscana.</p> <p>The bus station in Grosseto is located in Piazza Marconi (railway station). For</p>

Project carried out with the contribution of the





	further details, please refer to the website (www.at-bus.it)
Presence of adapted buses with ramp	it is advisable to check the availability of the service in advance by contacting Autolinee Toscane. Contact details: toll-free number: +39 800142424 or +39 05551351

Parking

Public parking nearby	Yes, outside and inside the walls
Type of public parking floor	Asphalt
Presence of parking space reserved for people with disabilities	Yes N. 1 external – N. 1 internal
Eventual notes	The outdoor public car park with 1 space dedicated to people with reduced mobility is located in Via XXIV Maggio near Porta San Giovanni, the internal one is located a few steps from Porta San Martino. Entry, circulation and parking in Magliano in Toscana are regulated by the Municipality of Magliano through specific provisions to facilitate accessibility. It is possible to enter freely by displaying the





	<p>pass. For ZTLs manned by cameras, contact the Municipal Police in advance to communicate the license plate and avoid penalties.</p> <p>Contact details at the following link. https://www.halleyweb.com/c053013/zf/index.php/uffici/index/detail/id/3</p>
--	--



1 Public parking via XXIV Maggio



2 Public parking via XXIV Maggio



Project promoted by



Regione Toscana



3 Reserved parking Via XXIV Maggio



4 Public parking Via XXIV Maggio



5 Public parking near Porta San Martino



6 Reserved parking near Porta San Martino

Project carried out with the contribution of the



**Presidenza del
Consiglio dei Ministri**
Ministro per la disabilità



Pathway from the car park to the entrance

Pathway from the car park to the starting point	Obstacle-free
Distance from parking to entrance	Parking Via XXIV Maggio about 300 meters Parking near Porta San Martino is located at the last stage of the itinerary. Since the route develops in a straight line, it is possible to leave the car and travel the route comfortably in reverse, starting from the last stage and ending at the initial one.
Type of trail surface	On asphalt
There are indicators and tactile maps	No





Description of the itinerary



Length	About 500 meters
Along the itinerary there are maps and tactile signs for the blind	No

Project carried out with the contribution of the





The itinerary starts from the main entrance of the village **Porta San Giovanni (Porta Nuova)**, built in the fifteenth century. located a short distance from the entrance to the village. Through an up and down of the sidewalk you reach a ramp that allows the entrance

to a beautiful terrace from where you can admire the surrounding panorama and the walls of the castle. The Fortress of Magliano is a set of medieval and Renaissance walls that surround the village of the same name in Maremma, Tuscany. Originally fortified in the thirteenth century, the city walls were enlarged and reinforced in later times, especially during the Medici period, and are considered one of the most complete and intact examples of medieval urban fortifications in the Maremma.

After passing the Gate, another ramp allows you to reach number 8 of Via Garibaldi, the main street of the village.

Accessibility:

On the right side before the door, there is a 60 cm long up and down with an 8% slope that allows us to arrive at a ramp.

The ramp has a length of 8.10 meters, width 136 cm and a slope of 3.5%, with handrails on the right.

Beyond the gate, to reach Via Garibaldi N. 8 we find a ramp of about 40 meters with a slope of 1.5%. The pavement in this section is made of regular stone blocks.



Project promoted by



Regione Toscana



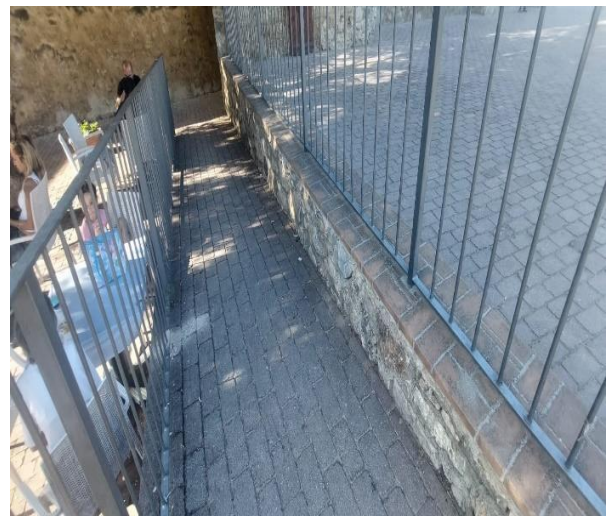
*7 Route from the public car park to Porta San Giovanni
(Porta Nuova)*



8 Porta San Giovanni (Porta Nuova)



*9 Ups and downs adjacent to the right side of Porta San
Giovanni*



1010 Ramp to access the panoramic terrace

Project carried out with the contribution of the



**Presidenza del
Consiglio dei Ministri**
Ministro per la disabilità

Project promoted by



Regione Toscana



11 Entrance Panoramic terrace



12 Castle wall circuit



13 City walls



14 Via Garibaldi (village entrance)

Project carried out with the contribution of the



**Presidenza del
Consiglio dei Ministri**
Ministro per la disabilità



At number 8 we find an **epigraph dedicated to Giuseppe Garibaldi affixed to the wall**. The relationship between the Maremma and the hero has always been special. The roots of this bond, still unchanged today despite the passage of time, date back to the two Maremma stages of Garibaldi's epic, in 1849 in Scarlino and in 1860 in Talamone, where the General always found a fervent welcome, a safe shelter and valid support.

A little further on, on the right, the **Palazzetto di Checco il Bello**, recognizable by the explanatory panel next to the door, by the three elegant mullioned windows and by the coat of arms of the Monaldeschi of Orvieto, which characterize its fourteenth-century Sienese style façade. The Monaldeschi family was a noble family of Germanic origin, rooted in Orvieto and who for a certain period had their rural residence here.

The palace is made of local stone and was built according to the typological schemes of Sienese architecture of the sixteenth century, adorned with mullioned windows and white marble frames. Unfortunately, today it is very tampered with, especially because the life plans have been staggered from the originals and consequently the openings of the windows and the entrance door have also been altered. The curious name derives from the nickname given to a certain Francesco Salvi, both for his aesthetic skills and for his fame as a Casanova. Salvi lived in the palace in the early twentieth century, but today the structure is used as a residential building.

Continue along Corso Garibaldi, on a regular pavement with a slope of 1.5% and skirting the side of the **Church of San Giovanni Battista**. At the end of the left side of the religious building, there is the **Piazza della Repubblica** where, turning left, there is a ramp to access the sacred building.



Project promoted by



Regione Toscana

Accessibility:

Via Garibaldi is a smooth and obstacle-free stone-paved road with a maximum gradient of 1.5%. No totems or information systems accessible along the route were detected.



15 Via Garibaldi 8, Palace with epigraph to Garibaldi



116 Palazzo Checco the beautiful



17 Checco Palace the Handsome

Project carried out with the contribution of the



Presidenza del
Consiglio dei Ministri
Ministro per la disabilità

Project promoted by



Regione Toscana



18 Checco Palace the Handsome



19 Via Garibaldi, left side of the Church of San Giovanni Battista



20 Regular paving in Via Garibaldi



21 Façade of the church of San Giovanni Battista

Project carried out with the contribution of the



**Presidenza del
Consiglio dei Ministri**
Ministro per la disabilità



The **Church of San Giovanni Battista** was built in the thirteenth century and is characterized by the elegant façade built in 1471 on commission by Giovanni di Matteo Gambarelli

The façade punctuated by a tympanum, very flattened side pilasters and an elegant central rose window recalls that of the Church of Santa Maria delle Nevi in Siena which seems to be the work of the same architect, in all probability a Sienese craftsman close to Antonio Federighi

At the entrance on the right side we find the flat access to the chapel and a very refined baptismal font carved in travertine with typically Renaissance motifs.

The interior of the chapel is essential with an altar and benches set up in the center of the hall that allow the passage to the sides.

Also at the entrance but on the left side we find a marble ciborium and frescoes of votive origin dating back to the fourteenth and fifteenth centuries, found during restoration work in the last twenty years of the last century.

The peculiarity of the church lies in its single nave, characterized by 4 side altars of the eighteenth century, made of plaster and stucco and adorned with decorative motifs typical of the Baroque style. In the center of the presbytery is the high altar dated 1700 as per the inscription.

Accessibility:

The religious building has an entrance ramp 200 cm long, 163 cm wide and 7% slope

At the entrance there is an external step 5 cm high and 28 cm deep and an internal step 12 cm high.

The entrance to the internal chapel on the right side of the nave is flat.



Project promoted by



Regione Toscana



22 Ramp and entrance portal of the Church of San Giovanni Battista



1223 External façade



2413 Travertine baptismal font

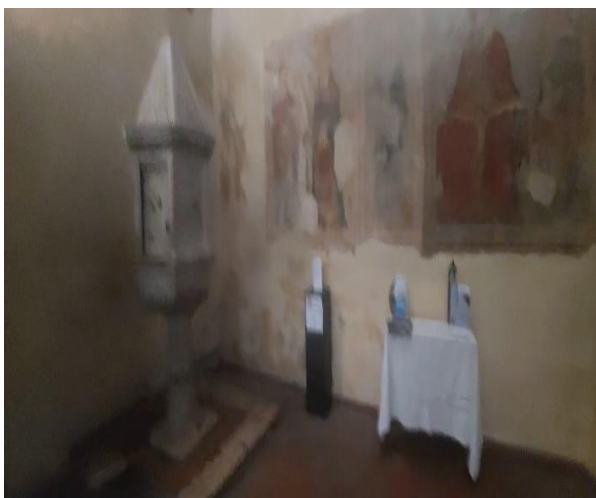


25 Interior Chapel

Project carried out with the contribution of the



**Presidenza del
Consiglio dei Ministri**
Ministro per la disabilità



26 marble ciborium and frescoes



27 Interior Church with a single nave

Leaving the church of S. Giovanni Battista, continue left on Via Garibaldi until you will find the **Palazzo dei Priori and Palazzo del Capitano** after about 10 meters. The building was built by Pietro Salimbeni Benassai in 1425, while the numerous coats of arms on the façade belonged to the various captains who succeeded one another over the centuries. The main entrance door is surmounted by a pointed arch.

The Palace was the seat of the captains and priors who for the entire time of their office were housed here at the expense of the citizens, not being able to leave unless escorted and only in case of extreme necessity. Over the centuries, the structure has undergone some renovations that have changed its original appearance.

Among the various coats of arms affixed to the façade are those of the noble Sienese families Benassai, Bandinelli and the Piccolomini dynasty.

Further on is the **Church of San Martino** with both side and bottom entrance and both not accessible due to the presence of numerous steps on both sides.

Project carried out with the contribution of the





The front of the church has a gabled façade and represents the first parish church in the historic center. It was built starting from the eleventh century with simple and elegant lines and with the use of only local travertine well squared and worked in filaretto.

Next to the church we find **Palazzo Margherita** completely renovated and now home to the cultural association "Arti in corso". The association organizes events, demonstrations and conferences and has an exhibition space open to the public and used for temporary exhibitions at Palazzo Margherita.

To the left of Palazzo Margherita we find a ramp that leads to the **Porta di San Martino**, of medieval origin. The gate has battlements and stylistic elements of the Aldobrandesca era, opens on the northern side of the historic center and represents one of the many panoramic and evocative places of Magliano.

Accessibility:

From the church to the Palazzo dei Priori, the pavement is regular and free of obstacles.

The main entrance door of the Palace (not open to visitors) has a step of height and depth of 27 cm.

The church of San Martino has a side and front entrance, both of which are not accessible due to the presence of numerous steps on both sides with varying heights. During the visit the church was being renovated.

To the left of Palazzo Margherita we find a ramp 18 meters long and a slope of 7.5% with paving in original stone blocks. The ramp leads to the Porta di San Martino



Project promoted by



Regione Toscana



28 Palazzo dei Priori. Entrance portal with pointed arch



29 Step Entrance portal



30 Palazzo dei Priori



31 Coats of arms of the noble families affixed to the façade

Project carried out with the contribution of the



**Presidenza del
Consiglio dei Ministri**
Ministro per la disabilità

Project promoted by



Regione Toscana



32 Side entrance of the Church of San Martino



33 Front Entry



34 Palazzo Margherita



35 Ramp

Project carried out with the contribution of the



**Presidenza del
Consiglio dei Ministri**
Ministro per la disabilità



15 Porta San Martino

Additional information and continuation of the itinerary by car.

Going back to the Palazzo di Checco, the beauty is located on the right Via Cesare Battisti. We walk along the entire street to the end, then turning onto Via Casellana where we will find stairs with numerous steps, to access the walls and the walkway that winds along the entire village.

People with reduced mobility can still admire the circuit by taking the car and driving along Via della Madonna, turning right into Via XXIV Maggio until you find an intersection on the right that leads to Via XX Settembre and then Via Mazzini.

From Via Mazzini you can continue towards Via del Madonnino where we can again admire the extension and the mammoth wall circuit of the village.



Project promoted by



Regione Toscana



16 Via C. Battisti. Staircase to access the walkway of the city walls



17 Walkway



18 View of the city walls



19 Via XX Settembre

Project carried out with the contribution of the



**Presidenza del
Consiglio dei Ministri**
Ministro per la disabilità



20 wall circuit



21 Tower

Events

Magliano in Toscana hosts numerous events that celebrate food and wine traditions and local history. The main traditional events of the village include:

Vinellando: Famous summer festival dedicated to wine, in particular to Morellino di Scansano, accompanied by tastings of typical products, music, and plays of light in the historic center.

Acquacotta Festival: Traditional mid-August event dedicated to the queen of Maremma soups, the Acquacotta, a poor dish of the peasant tradition.

May Festival: Spring event organized by the Pro Loco that animates the village with markets, music and entertainment.



Project promoted by



Regione Toscana

To check the current year's dates, travel prepared and get specific details on the program, you can refer to the official channels and local platforms:

<https://www.comune.magliano-in-toscana.gr.it/home/vivere/territorio/vinellando.html>



43 Vinellando poster



44 Tasting

Project carried out with the contribution of the



Presidenza del
Consiglio dei Ministri
Ministro per la disabilità



45 Vinellando 2025e

Accessible public places

In the village of Magliano in Toscana, the following public places with accessibility characteristics have been detected:

- **Osteria Maremmana da Giovanna – accessible toilets not detected**
- **Kaledois café – NO accessible toilets**

See tabs with details below.

LOCAL	
Room type and name	Osteria Maremmana da Giovanna
Location	Piazza Marconi 5
Local access mode	On a flat outdoor veranda. Inside the restaurant, through a step
Useful width of door/entrance gate	60 cm x 2, with internal opening

Project carried out with the contribution of the





Types of tables	Outdoor tables with central support with space underneath approx. 69 cm
Eventual notes	During our visit the place was closed.
TOILETS	
There is an accessible toilet	Not detected



46 Outdoor veranda



47 Outdoor veranda

LOCAL	
Room type and name	Kaledois café
Location	Piazza Marconi 5
Local access mode	At the outdoor gazebo: with step about 17 cm Near the outdoor veranda (right side) with

Project carried out with the contribution of the



Project promoted by



Regione Toscana

	ups and downs of the sidewalk, 60 cm long with 8% slope
Types of tables	Center support
Table service	YES
TOILETS	
There is an accessible toilet	NO



48 Outdoor veranda Bar and entrance



49 Tables and bar area on the top

Project carried out with the contribution of the



Presidenza del
Consiglio dei Ministri
Ministro per la disabilità



Communal toilets

There is an accessible toilet	During our visit, no public toilets with accessibility features were detected.
Eventual notes	<p>During our visit, no public toilets with accessibility features were detected.</p> <p>Through the information office we learned that equipped toilets are located inside the Town Hall in Via XXIV Maggio.</p> <p>The public toilets equipped and accessible for people with disabilities are located on the ground floor of the structure. Access is direct from the main entrance of the Town Hall or through the corridor adjacent to the offices of the Local Police. Since these are services within the garrison and the town hall, they are accessible during the opening hours of the municipal offices, i.e. from Monday to Saturday from 09:00 to 12:00, and on Tuesday and Thursday afternoons also from 16:00 to 17:00</p> <p>Barrier-free entrance: Access to the ground floor of the Town Hall of Magliano</p>

Project carried out with the contribution of the



Project promoted by



Regione Toscana

in Toscana is completely compliant and is accessible to all, without steps or architectural barriers that obstruct entry.

There is also a parking space.



22 Entrance to the Town Hall with reserved stall

Project carried out with the contribution of the



**Presidenza del
Consiglio dei Ministri**
Ministro per la disabilità



Medical practices/healthcare facilities

Hospitals near the property	Misericordia Hospital -Grosseto Via Senese 161 - Grosseto 58100 Switchboard +39 0564 485111 Distance 35 km
Dialysis facilities	Dialysis service present. It is activated at the request of the interested party. For organisational reasons, information and requests should preferably be requested well in advance at the following addresses: Grosseto provincial area MISERICORDIA HOSPITAL IN GROSSETO Nephrology and Dialysis Unit Tel.+39 0564 485.218 from Monday to Friday, hours 09.00-12.00/15.00-19.00 Papi Alberto - Hemodialysis Nursing Coordinator. Tel. +39 0564 485159 - alberto.papi@uslsudest.toscana.it



Project promoted by



Regione Toscana

	<p>Clinical Manager: Dr. Paolo Conti mobile +39 335 7207316 - paolo.conti@uslsudest.toscana.it</p> <p>Nursing Manager for Grosseto: Dr. Lorenzo Baragatti - lorenzo.baragatti@uslsudest.toscana.it</p>
Other healthcare facilities	<p>ASL Toscana sud est district of Magliano in Toscana Via XXIV Maggio 9 58051 Magliano in Toscana Tel +39 0564 592329</p>

TESTED BY: [Handy Superabile Social Promotion Association](#) in 2025

Project carried out with the contribution of the



Presidenza del
Consiglio dei Ministri
Ministro per la disabilità